

# Strom Plumbing

BY  
Sign of  the Crab

Ph: (916) 638-2722 / Fax: (916) 638-2725

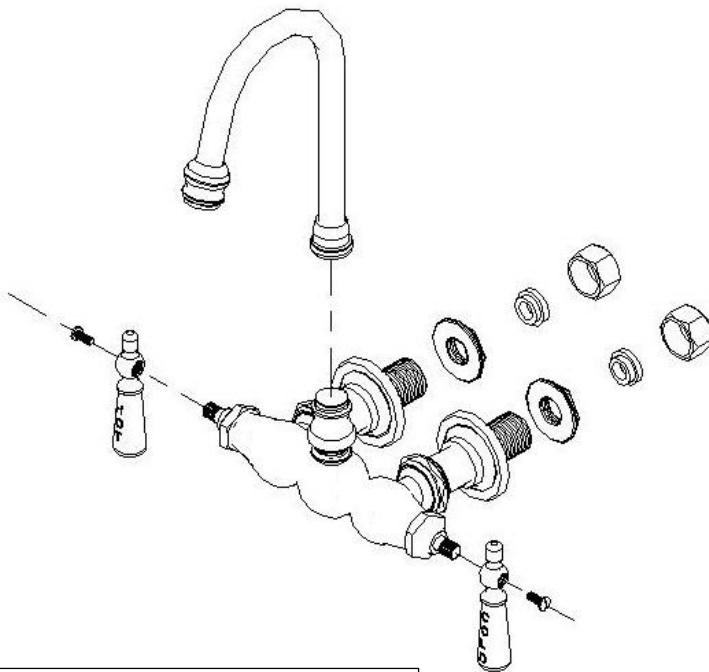
## Installation Information

### Item #P1026

### Leg Tub Faucet, 3 3/8" Centers

Warranted only when installed by a qualified, licensed plumber. Please use Teflon tape on all threaded connections.

1. Shut off the water supply to the fixture before installation.
2. Insert the faucet body inlet tubes through the 2 holes on the tub. Screw the lock nuts onto the threaded shanks and tighten to secure the faucet to your tub.
3. Attach your spout and tighten the hold down nut hold in place.
4. Attach the handles with the screws provided.
5. Attach your supply lines to the 3/4" IPS faucet inlet tubes.
6. Remove the aerator from the end of the spout and turn on the water supply to flush the hot and cold lines until the water is clear.
7. Make no adjustments to valves or valve stems. They are tested at the factory for optimum performance.



#### Parts Included:

- Faucet Body, 3 3/8" centers
- Spout
- Handles (2)
- Lock Down Nuts
- Supply Nuts & Washers

**Leg tub filler outlet shall be installed minimum 2" above the flood level rim of the fixture**

***HANDLE STYLE  
MAY VARY***