



Installation Information

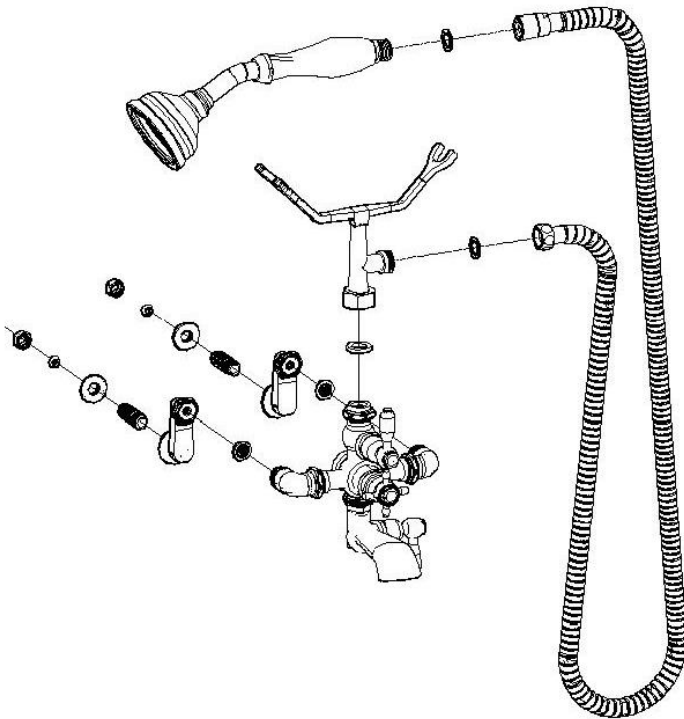
Item #P0889

Thermostatic Leg Tub Faucet, with Swing Arm Couplers for Variable Centers

Warranted only when installed by a qualified licensed plumber. Use Teflon tape on all threaded connections.

1. Shut off the water supply to fixture before installation.
2. Loosen the nuts to make the swing arm couplers adjustable.
3. Connect the shorter threaded ends of nipples to the swing arms. Insert the threaded nipples through the 2 holes in the tub. Screw the lock nuts onto the threaded nipples and tighten.
4. Position and tighten the nuts of the swing arm couplers to the faucet body.
5. Place the washer in the brass nut at the bottom of the cradle, and then connect the cradle to the faucet. Tighten the nut.
6. Attach the tapered end of the hose to the hand shower and the nut end to the outlet on the cradle.
7. Place the hand shower on the cradle.
8. Attach your supply lines to the ½" IPS inlet nipple.
9. Make no adjustments to valves or valve stems. They are tested at the factory for optimum performance.

This faucet is tested to remain within 1 degree Fahrenheit of your desired setting throughout its operation, with an automatic temperature stop at 104 degrees Fahrenheit. The unit also has a built-in anti-syphon.



Parts Included:

- Thermo Faucet Body
- Swing Arm Couplers, pair
- Screen Washers (2)
- Inlet Cradle
- Handheld Shower
- Hose with washers