



Installation Information

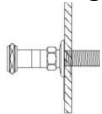
Item #P1027

British Telephone Wall Mount Faucet with 7" Centers

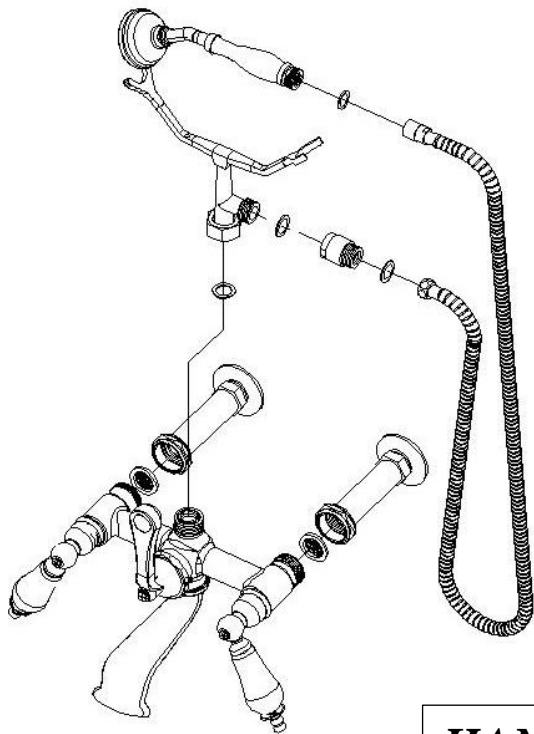
Warranted only when installed by a qualified, licensed plumber. Please use Teflon tape on all threaded connections.

Please use Teflon tape on all threaded connections.

1. Shut off the water supply to the fixture before installation.
2. Rough in $\frac{1}{2}$ " IPS male pipe, $\frac{1}{2}$ " past the finished wall, with 7" centers. **Please note before roughing in: The spout drop is 4 $\frac{1}{2}$ " from the center of the inlet to the bottom of the spout. Allow adequate clearance of spout for tub being installed according to your local code requirement.**

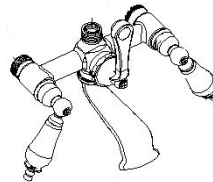


3. Thread on the wall mount couplers. Insert the screen washer into the nut of the coupler.
4. Attach the faucet body to the wall mount couplers and tighten nuts to secure.
5. Connect the cradle to the faucet using washers provided. Tighten the nut to secure in place.
6. Add the vacuum breaker provided to the outlet of the cradle. Then attach the nut end of the hose to the vacuum breaker and the tapered end of the hose to the hand shower. Place the hand shower on the cradle.
7. Make no adjustments to valves or valve stems. They are tested at the factory for optimum performance.
8. Turn on the water and pressure-test connections.



Parts Included:

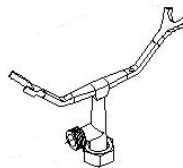
Faucet Body



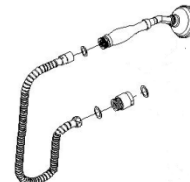
Wall Mount Couplers (pr)
w/screen washers



Inlet Cradle



Handheld Shower,
Hose & Vacuum Breaker



HANDLE STYLE MAY VARY